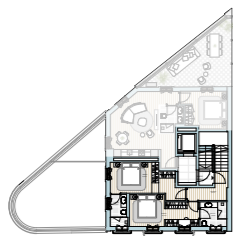
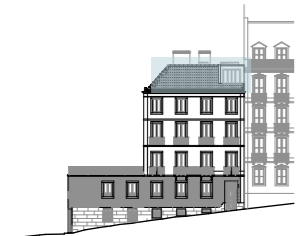


# Maria RESIDENCES

Rua Maria 1, Lisboa



UNIDADE IJ  
PENTHOUSE

PISO 4 E 5  
2 SUITES  
1 CASA DE BANHO  
6 VARANDAS  
TERRAÇO NA COBERTURA

ABP 2204,87 sqft | 204,84 m<sup>2</sup>

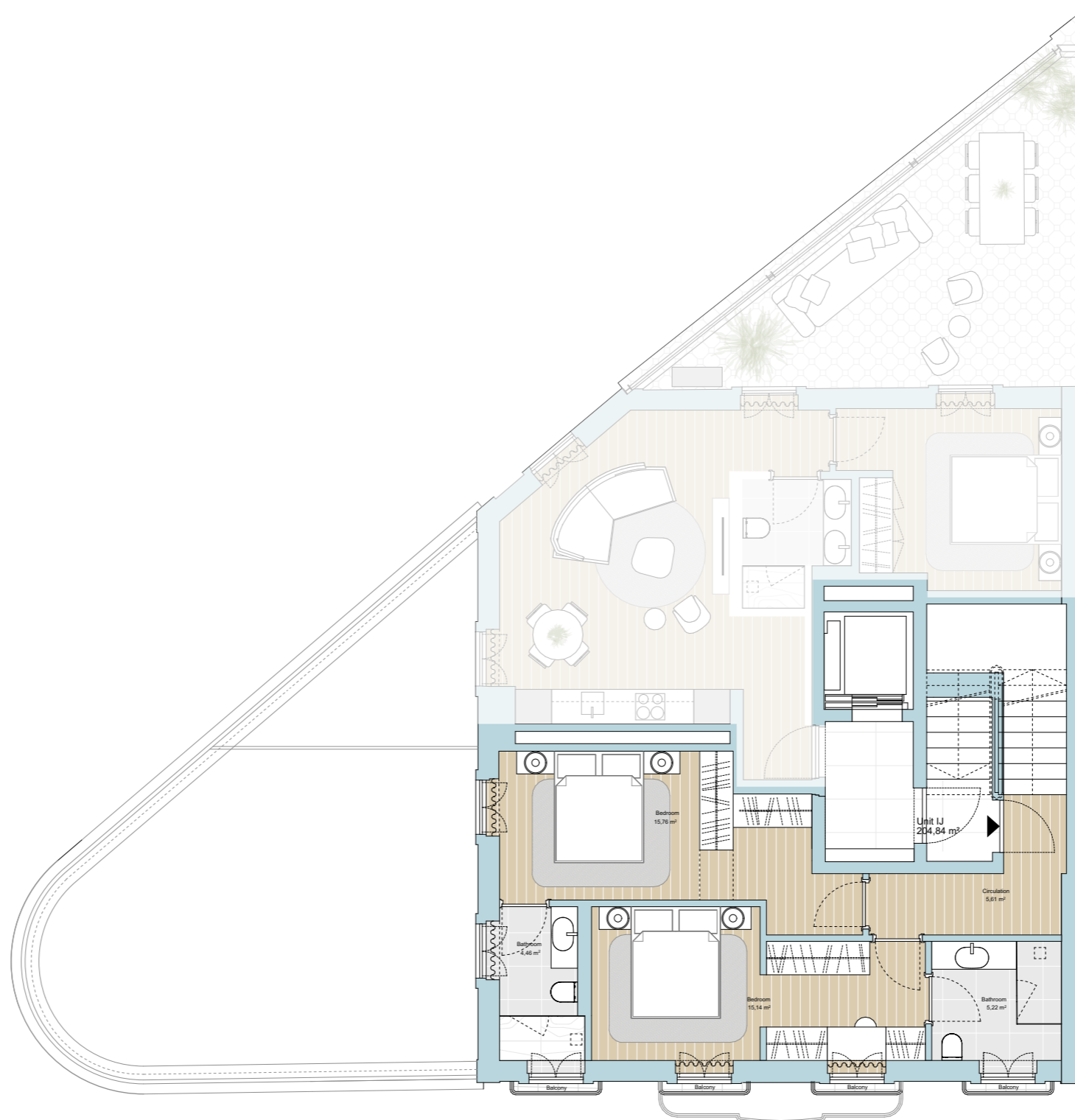
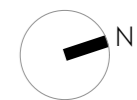
EXPOSIÇÃO SUL, ESTE E OESTE

UNIT IJ  
PENTHOUSE

FOURTH AND FIFTH FLOOR  
2 SUITES  
1 BATHROOM  
6 BALCONIES  
ROOFTOP TERRACE

PGA 2204,87 sqft | 204,84 m<sup>2</sup>

SOUTH, EAST AND WEST EXPOSURE

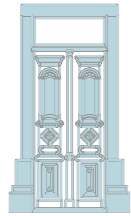


FIFTH FLOOR

All square footages are approximate. Development by GAVINHO PROPERTIES LDA. The complete offering terms are in an offering plan available from the developer. Units will not be offered furnished unless stated on the acquisition contract. Furniture and landscaping layouts shown are for concept and can be changed or adapted to suit engineering and architecture demands. No representation or warranty is made that a unit owner will be able to implement the furniture or landscaping layout shown on this floor plan. Due to the unique façade of this building, unit area per floor as well as windows in this layout may vary from floor to floor. Refer to the offering plan for dimensions and conditions.

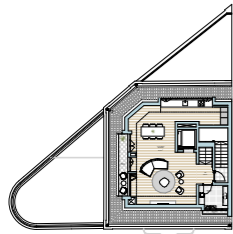
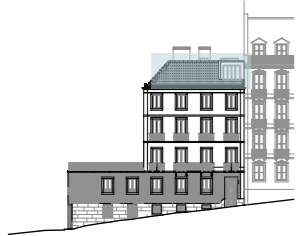


1M



# Maria RESIDENCES

Rua Maria 1, Lisboa



UNIDADE IJ  
PENTHOUSE

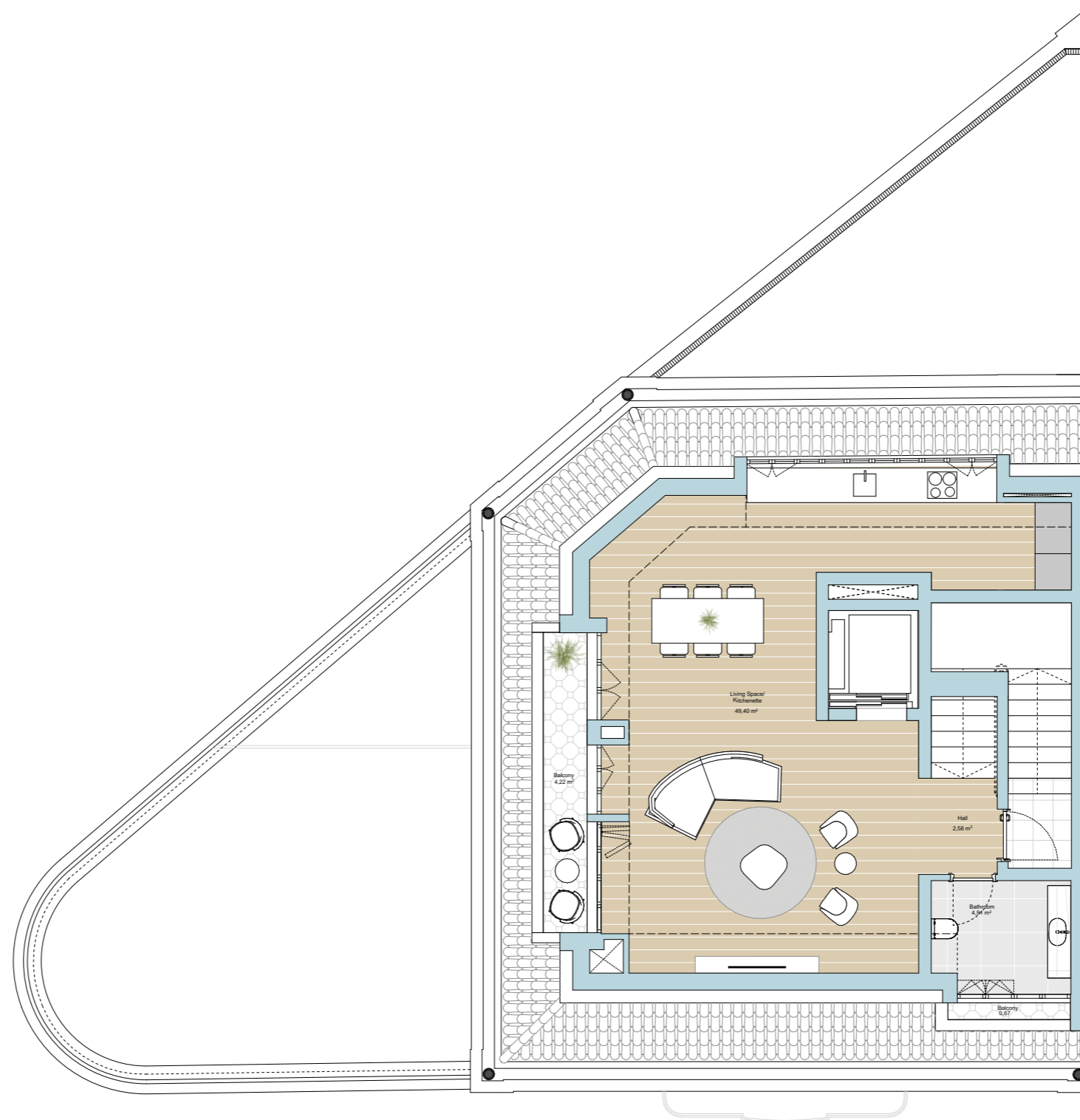
PISO 4 E 5  
2 SUITES  
1 CASA DE BANHO  
6 VARANDAS  
TERRAÇO NA COBERTURA  
ABP 2204,87 sqft | 204,84 m<sup>2</sup>  
EXPOSIÇÃO SUL, ESTE E OESTE

UNIT IJ  
PENTHOUSE

FOURTH AND FIFTH FLOOR  
2 SUITES  
1 BATHROOM  
6 BALCONIES  
ROOFTOP TERRACE  
PGA 2204,87 sqft | 204,84 m<sup>2</sup>  
SOUTH, EAST AND WEST EXPOSURE



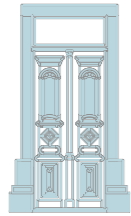
All square footages are approximate. Development by GAVINHO PROPERTIES LDA. The complete offering terms are in an offering plan available from the developer. Units will not be offered furnished unless stated on the acquisition contract. Furniture and landscaping layouts shown are for concept and can be changed or adapted to suit engineering and architecture demands. No representation or warranty is made that a unit owner will be able to implement the furniture or landscaping layout shown on this floor plan. Due to the unique façade of this building, unit area per floor as well as windows in this layout may vary from floor to floor. Refer to the offering plan for dimensions and conditions.



FIFTH FLOOR

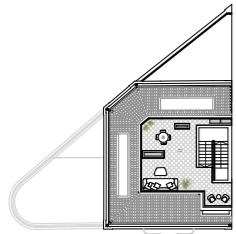
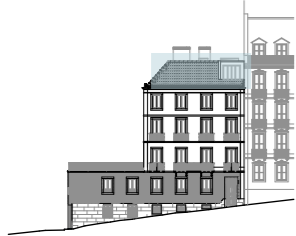


1M



# Maria RESIDENCES

Rua Maria 1, Lisboa



UNIDADE IJ  
PENTHOUSE

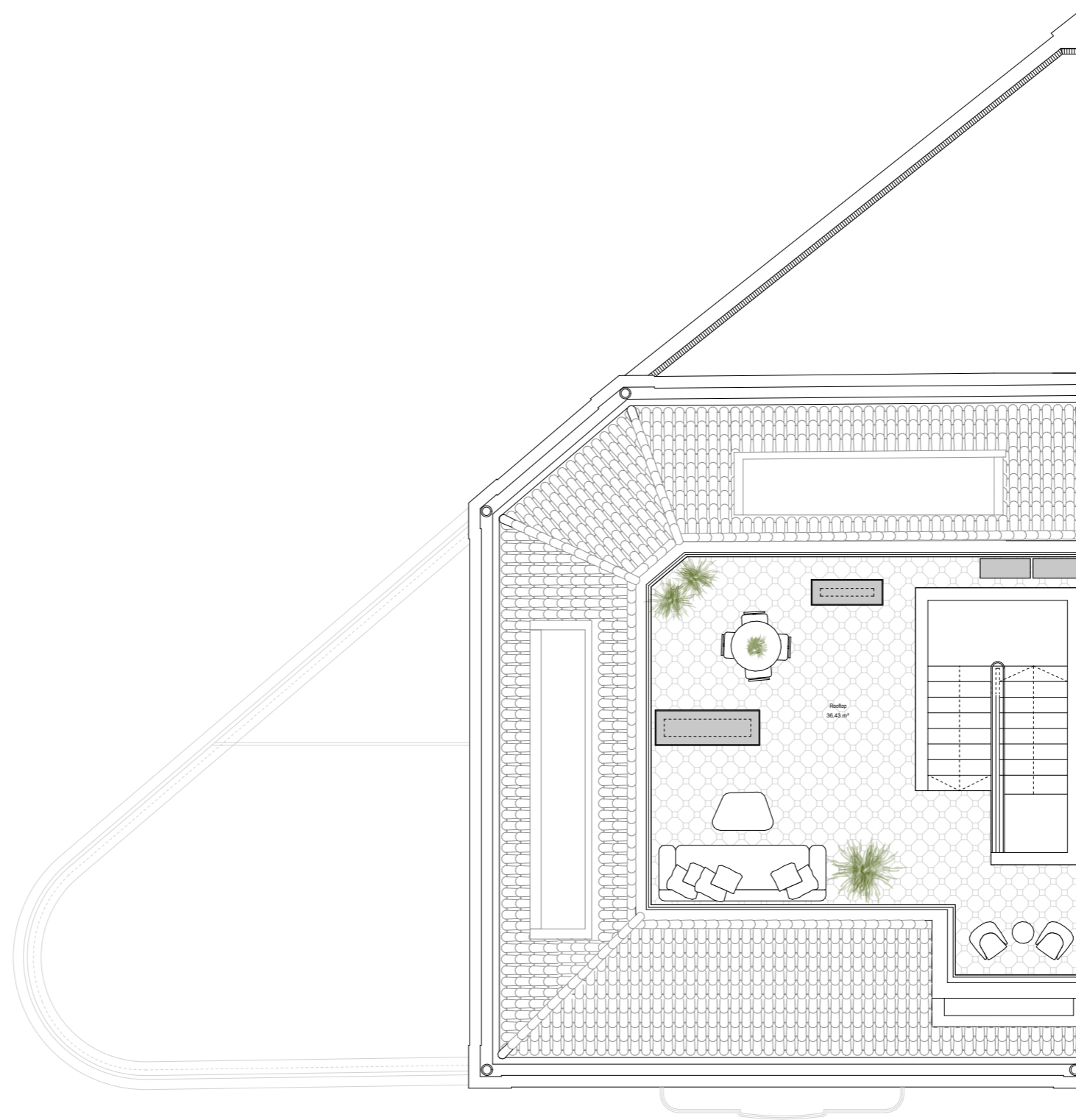
PISO 4 E 5  
2 SUITES  
1 CASA DE BANHO  
6 VARANDAS  
TERRAÇO NA COBERTURA  
ABP 2204,87 sqft | 204,84 m<sup>2</sup>  
EXPOSIÇÃO SUL, ESTE E OESTE

UNIT IJ  
PENTHOUSE

FOURTH AND FIFTH FLOOR  
2 SUITES  
1 BATHROOM  
6 BALCONIES  
ROOFTOP TERRACE  
PGA 2204,87 sqft | 204,84 m<sup>2</sup>  
SOUTH, EAST AND WEST EXPOSURE



All square footages are approximate. Development by GAVINHO PROPERTIES LDA. The complete offering terms are in an offering plan available from the developer. Units will not be offered furnished unless stated on the acquisition contract. Furniture and landscaping layouts shown are for concept and can be changed or adapted to suit engineering and architecture demands. No representation or warranty is made that a unit owner will be able to implement the furniture or landscaping layout shown on this floor plan. Due to the unique façade of this building, unit area per floor as well as windows in this layout may vary from floor to floor. Refer to the offering plan for dimensions and conditions.



ROOFTOP



1M