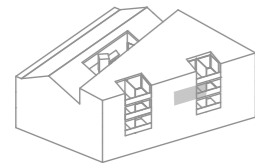
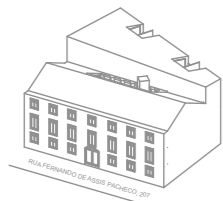


OURIQUE

Rua Fernando Assis Pacheco Letra D , com
 acesso pela Rua Saraiva de Carvalho n.207,
 1250-245 Lisboa



SECOND FLOOR

1 BEDROOM

1 BATHROOM

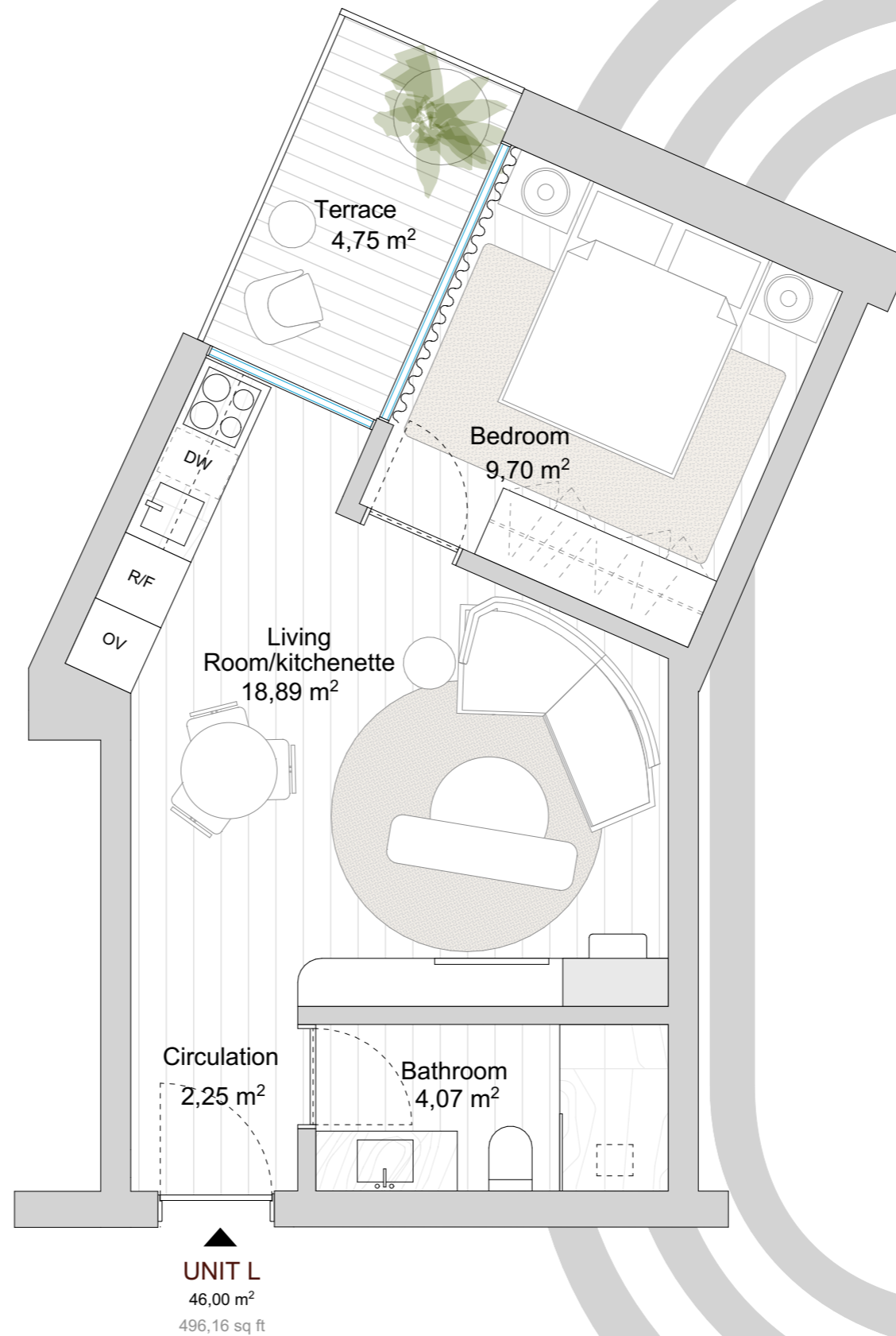
496,16 sq ft | 46,00 sq m*

EAST EXPOSURE

THE
 ADDRESS



All square footages are approximate. The complete offering terms are in an offering plan available from the developer. Units will not be offered furnished unless stated on the acquisition contract. Furniture and landscaping layouts shown are for concept and can be changed or adapted to suit engineering and architecture demands. No representation or warranty is made that a unit owner will be able to implement the furniture or landscaping layout shown on this floor plan. Due to the unique façade of this building, unit area per floor as well as windows in this layout may vary from floor to floor. Refer to the offering plan for dimensions and conditions.



RESIDENCE L | SECOND FLOOR | 1 BEDROOM